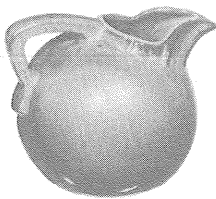
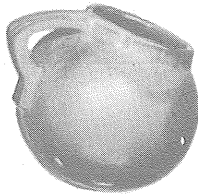


87



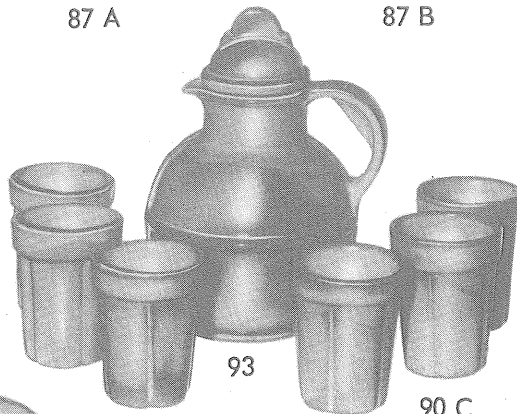
87 A



87 B

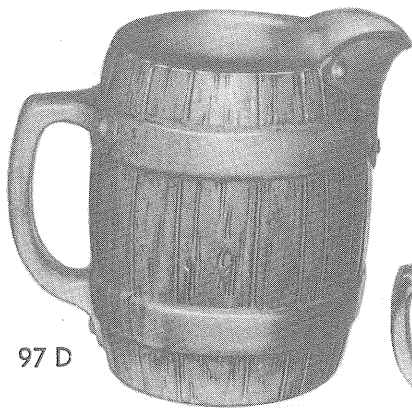


80

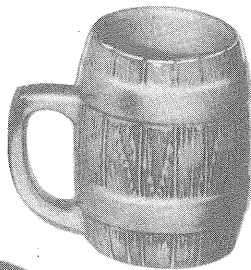


93

90 C



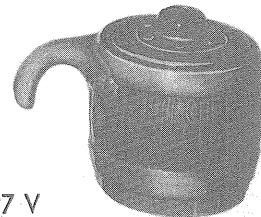
97 D



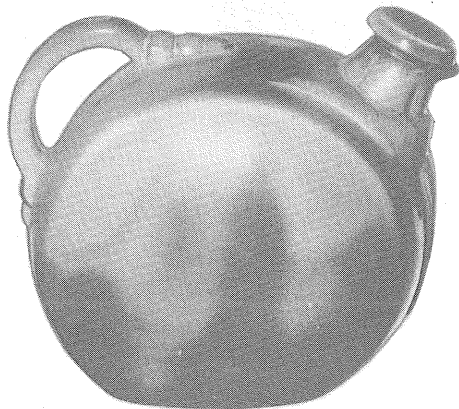
97 M



97 V



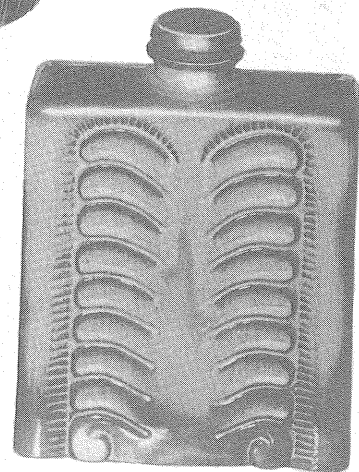
97 U



86



88



83

80—2 qt. pitcher	2.00	97m—barrel mug, 16 oz.	1.00
83—refrigerator decanter, 60 oz.	2.00	97d—barrel pitcher, 65 oz.	2.00
86—refrigerator jug, 70 oz.	2.00	97u—barrel individual baker, 10'oz.	1.00
87—1 qt. pitcher	1.50	97v—barrel bean baker, 2 qt.	2.00
87a—10 oz. creamer75	90c—juice cup, 3 oz.25
87b—10 oz. sugar75	93—juice pitcher with lid, 25 oz.	1.50
88—refrigerator jug, 50 oz.	1.50	93 set—pitcher and 6 cups	3.00

THIS PAGE AVAILABLE IN PRAIRIE GREEN, DESERT GOLD, ONYX BLACK,
TURQUOISE BLUE, WHITE SAND, SORGHUM BROWN AND RED BUD